

# MDP 3020 - IP Media Gateway

### Compact Half-Rack IP Media Gateway



#### KEY FACTS:

- Compatible with MD8000 platform
- Follows Standards (including 2022-2/6/7, TR-01)
- Simultaneous video, audio, and data services
- 1GbE or 10GbE trunk interface
- Dual trunk protection (In/Out band Management)
- All resolutions up to 1080P
- On board provisioning interface
- Supports:
  - 2 x JPEG or uncompressed video streams up to 1080P
  - DVB-ASI (Supports TS Only)
  - Hitless Video Protection
  - 1GbE x 2 (Auto Protection)
  - 10GbE x 2 (Hitless Protection) Max 8Gbps

#### KEY FEATURES:

- Compact and portable – small footprint
- Multi format support, including 3G / HD / DVB-ASI / SD-SDI
- SDI and HDMI output interfaces
- High capacity trunk interface
- Upgradable functionality

#### APPLICATIONS:

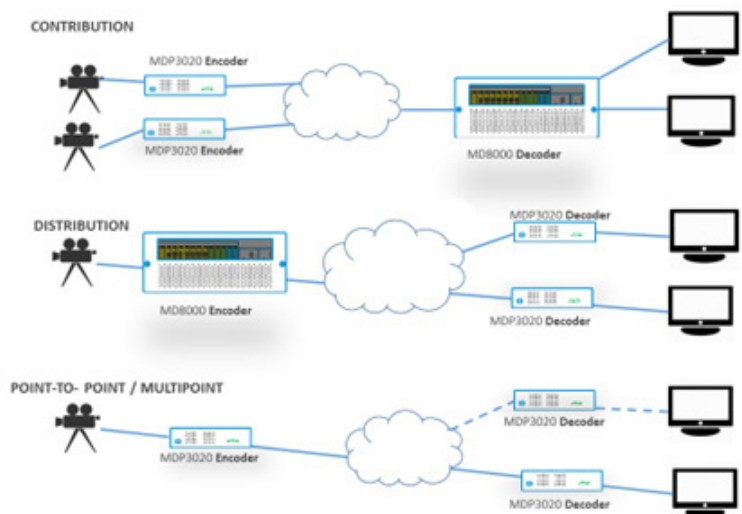
- Local access point to point (HDVT W/ MMC)
- Contribution Quality Broadcast Feeds
- Low cost network edge device
- Remote Production

The Media Links MDP 3020 is an advanced, high quality standalone edge device, focused on addressing the needs of the broadcast media market. With insatiable demand for live content from all types of environments, the need for a portable, network protected, remotely configurable and cost effective edge device is huge. The MDP 3020 can process ever-increasing amounts of media information over IP networks, existing broadcast networks, as well as point-to-point fiber networks.

Further, the MDP 3020 is designed primarily for smaller scale remote production, MD8000 edge, and local point-to-point applications where economical IP media conversion is required.

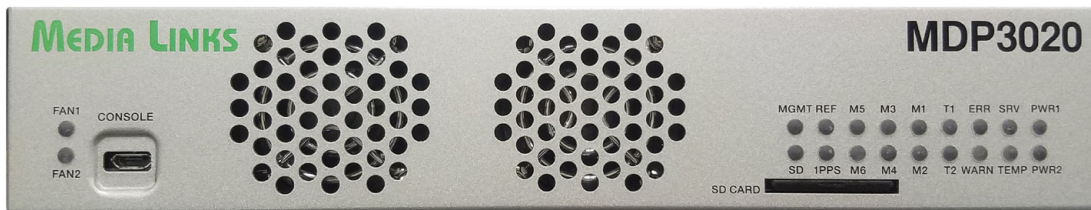
The device can be used in three primary configurations, either separately or in combination due to its multichannel capability:

- For Contribution applications, as an edge device (encoder)
- For Distribution applications, as a remote video playout device (decoder)
- For Point-to-Point local video and distribution applications, when used in pairs (encoder to decoder)



### SPECIFICATIONS & SUPPORTING PARAMETERS:

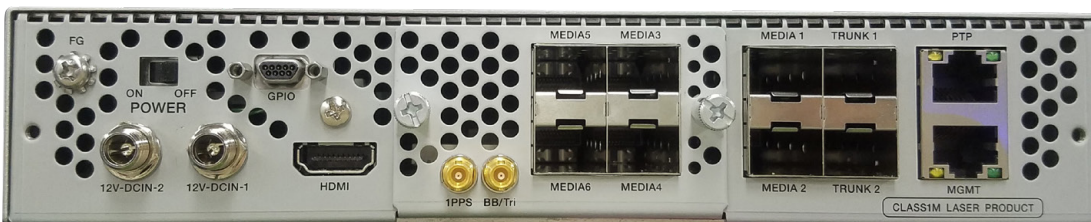
|            |   |                      |   |
|------------|---|----------------------|---|
| VIDEO      | <ul style="list-style-type: none"> <li>• SDI or ASI inputs</li> <li>• JPEG2000 / VSF TR-01</li> <li>• SMPTE 2022-6 or 2022-2 RTP encapsulation</li> <li>• SMPTE 2022-5 or 2022-1 Tx FEC</li> <li>• Internal color bar generator</li> </ul>  | MD8000 COMPATIBILITY | <ul style="list-style-type: none"> <li>• ST-TX-J2K video input card (video)</li> <li>• ST-RX-J2K video output card (video)</li> <li>• VIF-2022 support – coming soon</li> <li>• 10GbE Hitless card (data)</li> <li>• 1GbE Two Port Line card (data)</li> <li>• 1GbE Eight Port Line card (data)</li> </ul>  |
| AUDIO      | <ul style="list-style-type: none"> <li>• 16 audio channels (8 AES)</li> <li>• SDI input signal audio transmission (Transmits audio based on SMPTE302M)</li> <li>• Internal audio test generator (1 KHz tone)</li> <li>• Ancillary data transmission</li> <li>• MAD1 using SFP on Media port 1 or 2</li> </ul>   | PHYSICAL             | <ul style="list-style-type: none"> <li>• Form Factor – 1RU, Half-rack width; 2 units per standard 19" rack width</li> <li>• Dimensions: 215 mm (W) * 42 mm (H) * 300 mm (D)<br/>8.46" (W) x 1.65" (H) x 11.81" (D)</li> <li>• Weight: 2.7Kg / 5.95 lbs</li> <li>• Power Consumption: 108VA or less</li> <li>• Supports dual power supplies for redundancy</li> </ul>                        |
| TRANSPORT  | <ul style="list-style-type: none"> <li>• MPEG2-TS Standard</li> <li>• SDI Standard (SMPTE 259M/292M/424M)</li> <li>• SDI over IP Standard (SMPTE 2022-5/6)</li> </ul>   | REGULATORY           | <ul style="list-style-type: none"> <li>• CFR 47 FCC part 15 Subpart B Class A (USA)</li> <li>• EN 55032:2012/AC:2013 Class A ITE (EU)</li> <li>• NEBS Level 1</li> <li>• ICES-003 Issue4 Class A (Canada)</li> <li>• UL 60950-1-07, 2nd edition</li> <li>• CSA 60950-1-07, 2nd edition</li> <li>• IEC 60950-1:2005 (Second Edition)+Am 1:2009+Am2:2013</li> <li>• RoHS compliant</li> </ul> |
| INTERFACES | <ul style="list-style-type: none"> <li>• Available with either electric (BNC, up to 3Gbps) or optical</li> <li>• 2 x video input/output ports (Max 2 total)</li> <li>• Dual 10Gbps trunks</li> <li>• Dual 1G/10G Data Ports (8Gbps Total throughput using Hitless data)</li> <li>• Built-in HDMI output port, supports HDMI 2.0/HDCP 2.2</li> <li>• Front panel micro-USB serial management port @ 115,200 bps</li> <li>• RJ-45 Ethernet console port; RJ-45 PTP timing port</li> </ul> | APPLICATIONS         | <ul style="list-style-type: none"> <li>• SDI/IP, IP/IP Media Conversions</li> <li>• Contribution Quality Broadcast Feeds</li> <li>• Studio-to-Studio Media Exchange</li> <li>• Remote Production and OB Van Environments</li> </ul>   |
| MANAGEMENT | <ul style="list-style-type: none"> <li>• Configuration and log message storage on SD memory card</li> <li>• Self-diagnostics</li> <li>• LLDP for auto-discovery</li> <li>• Multi-level secure user access</li> <li>• Front panel status and error LEDs</li> <li>• Rapid profile-based configuration and service provisioning</li> </ul>   |                      |   |
| PROTOCOLS  | <ul style="list-style-type: none"> <li>• IPv4</li> <li>• HTTP for web management</li> <li>• SSH (Telnet) command line interface (CLI)</li> <li>• SNMPv1, including traps</li> <li>• Syslog</li> <li>• PTP (Future Release)</li> <li>• NTP and Time Setting</li> <li>• Ping, Traceroute</li> </ul>   |                      |   |



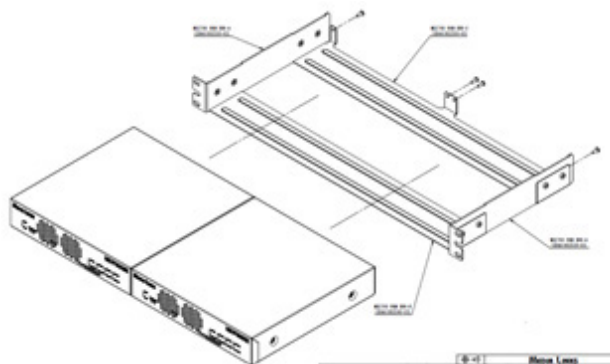
MDP 3020 Front View



MDP 3020 Rear View with BNC



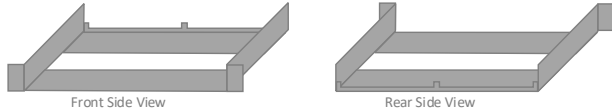
MDP 3020 Rear View with SFP Module



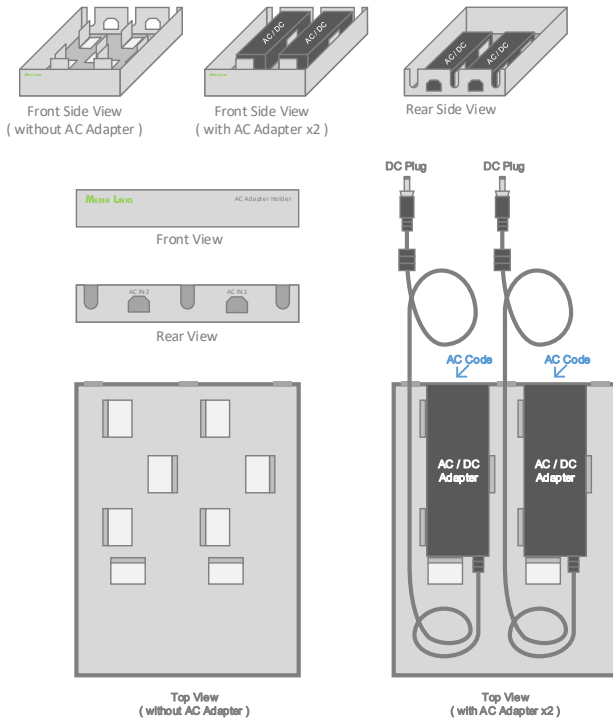
Half-rack form factor, two MDP3020 units per 1 RU 19" rack.

Optional mounting shelf shown.

### MDP3020 Rack Mount Tray

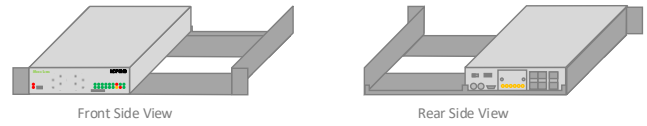


### MDP3020 AC Adapter Holder

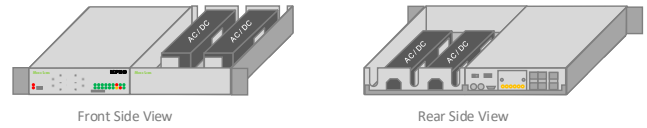


### MDP3020 Rack Mount Tray Use Cases

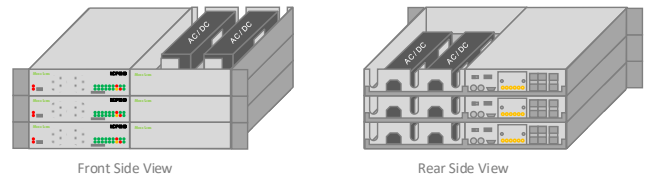
#### Use case(1) 1 Unit per 1RU



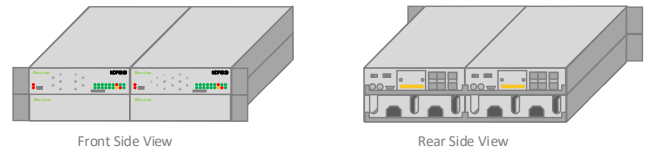
#### Use case(2) 1 Unit per 1RU with AC Adapter Holder



#### Use case(3) 1 Unit per 1RU with AC Adapter Holder x 3



#### Use case(4) 2 Unit per 1RU with AC Adapter Holder x 2



Media Links (Headquarters)  
Kawasaki Tech Center 18F  
580-16 Horikawa-cho,  
Saiwai-ku, Kawasaki-shi,  
Kanagawa 212-0013 Japan  
Phone: +81 44-589-3440  
query@medialinks.co.jp

Media Links Americas  
431-C Hayden Station Road  
Windsor, CT 06095  
USA  
Phone: +1 860-206-9163  
Fax: +1 860-206-9165  
info@medialinks.com

Media Links Australia  
2-12 Rokeby Street,  
Collingwood, VIC 3066,  
Australia  
Phone: +61 3-9017-0175  
Fax: +61 3-8456-6339  
info@medialinksaustralia.com.au

Media Links EMEA  
Suite 18242  
PO Box 6945  
London W1A 6US  
United Kingdom  
Phone: +44 (0)20 7096 9569  
emea\_info@medialinks.com

**MEDIA LINKS®**  
Media Defined Networking®

[www.medialinks.com](http://www.medialinks.com)